



New Oriel Hall Group Exhibition

Saturday - Sunday 10am - 5pm

- ☆ David Ringsell
- ☆ Christine McKenzie
- ☆ CK Fitzgerald
- ☆ Piu Bose
- ☆ Paul Brokensha
- ☆ Emma Wharton Love
- ☆ Deirdre Elphick
- ☆ Roberto Juarez Delgado
- ☆ Jenifer Shearn
- ☆ Amanda Gell

Open Studios

- 1. Bath Artist Printmakers** 3B Upper Lambridge St, BA16RY All weekend - 11am - 5pm
- 2. Ione Parkin RWA Rear Studio.** 3B Upper Lambridge St BA1 6RY Sat & Sun 11-5pm, Monday 12-4pm
Accessibility: Level access through Bath Artist Printmakers OR access with one step from side road
- 3. Roberto Juarez Delgado** 1 Upper Lambridge St, BA1 6RY Sat & Sun 11am - 5pm, Mon 11am-4pm
Accessibility: (Yellow door, number 1 - between Deli Larkhall and Farm Shop) 1st floor - With steps
- 4. Simon Spilsbury** 4 Grosvenor Terrace, BA1 6SR Open Sunday 11am - 5pm
- 5. Paula Knight** - 28 Brooklyn Rd, Larkhall, BA1 6TE All weekend - 11am - 5pm
- 6. Katherine Fraser** 41 Brooklyn Rd, Larkhall, BA1 6TF All weekend 10am - 4pm
- 7. Teresa Foster** 47 Brooklyn Road, BA16TF
Sat & Sun 11am-5pm / Mon 11am-4pm
- 8. Fifi Charrington** St Mary Church, Upper Swainswick, BA1 8DA
All Saturday & Sunday - 11am - 5pm
- 9. Jemma Leigh-Wood** St Mary Church, Upper Swainswick, BA18DA
Saturday & Sunday 11am - 5pm
- 10. Emma Lacon** The old Mill, Deadmill Lane All weekend - 10am - 4pm
Accessibility: Uneven ground to entrance and steep steps
- 11. Simon Hodges** PS Hillview Studio, 12 Hill View Rd, BA1 6NX All weekend - 11am - 5pm
Accessibility: Steps from road to house and inside house to studio and garden
- 12. John Eames & Susan Green** 7 Malvern Buildings, BA1 6JX
All weekend - 11am - 5pm Accessibility: Uneven garden setting with small number of steps and no handrails. Can be slippery if rainy
- 13. Alan Hemming** 24 Fairfield Ave, Fairfield Park BA1 6NH
All weekend - 11am - 5pm. Raku firing event Sat PM
Accessibility: Regret no disabled access as garden has steep steps
- 14. Lucy Cory** 4 Charcombe Way, Fairfield Park, Bath, BA1 6JZ
All Weekend 10am - 4pm
Accessibility: Studio just set back from the road at the bottom of the steps

Visit www.larkhall-festival.org.uk/2024openstudios for more information on each artist and their mediums

Artist studios are open all weekend (Sat/Sun/Mon) 11am - 5pm, unless stated otherwise

LARKHALL open studios

New Oriel Hall Group Exhibition Spring Garden Trial

saturday 4 may
sunday 5 may
monday 6 may

Spring Garden Trial

Open Monday 6th May - 11am - 5pm

1. The Ferns & Garden Cottage

Deadmill Lane
Tulips, aquilegia, blossom and teas, some plants for sale. Refreshments served 11-5.

2. Community Garden

Alice Park
Winner of RHS South West in Bloom Community Awards 2021. Plants seeds and produce available

3. 12 Hillview Road

An artist's garden with structural planting, shrubs, perennials and grasses between 2 studios. Seating available. Access via house and steps

4. Gardenalia, London Road

Delightfully eccentric shop on London Road is a haven of green thinking, with special Festival offers. Open from 9am till 5.30 pm

5. 39 Uphill Drive

Bee and butterfly garden with the Orient and the Mediterranean contrasting

6. 10 Larkhall Place

Long established, large productive garden - a continuous work in progress. Come and chat about compost, green manure, snails, or just sit by the pond!

7. 34 Malvern Buildings

A productive garden with a focus on biodiversity, no dig beds, woven fence, dead hedge, wildlife pond, meadow perennial beds. Teas and cakes served. Access over the road from the house.

8. 11 & 12 Hampton View

Two neighbouring front gardens that offer different approaches to small space gardening with a community focus

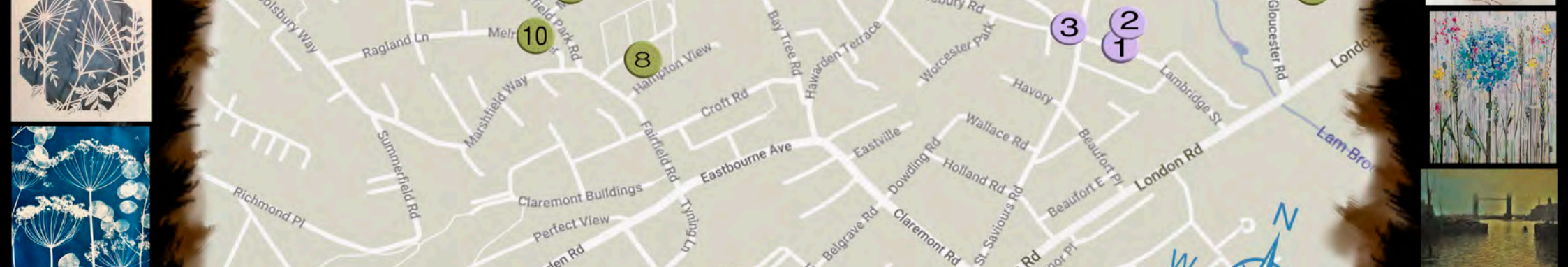
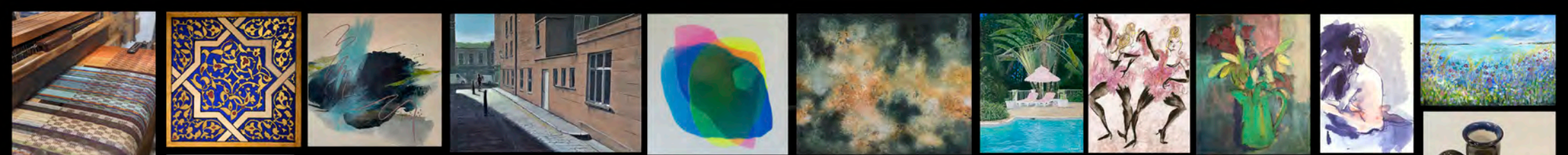
9. Bay Tree Road Allotments

A unique community allotment on a journey to protect and enhance this space for food growing and biodiversity

10. Fairfield Arms

Winner of Bath in Bloom, open 12-4 for refreshments





LARKHALL FESTIVAL 2024

